

# Emergency Extraction Information for Aircraft **Bill Stein - N540WS**

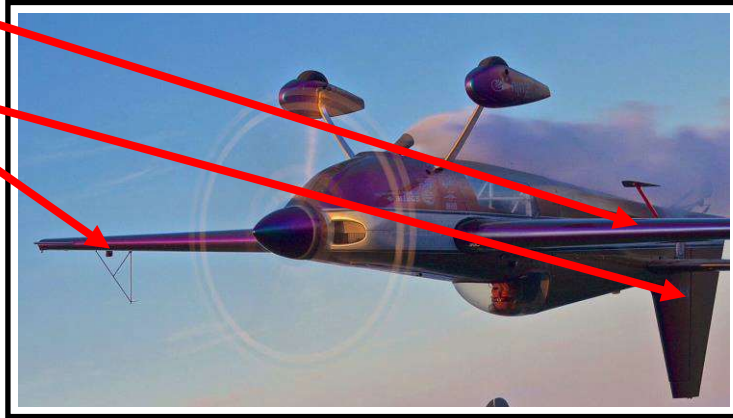


Aircraft Type: Zivko Edge  
540 Registration: N540WS  
Pilot Name: William Stein  
Emergency Contact Name:

May be lifted from any part of airplane if upside down.

- Wings
- Tail
- Landing gear
- Fuselage
- Propeller hub

## Lift Points N540WS



Only way out is through the top of the airplane at canopy

- Pilot is surrounded by a steel tube fuselage (cage)
- Open or break the canopy
- Canopy is Lexan and easily broken with axe or hatchet
- Pull pilot out through top of plane

## Pilot Exit N540WS



## Electrical/Ignition System N540WS

Turn off the Smoke  
Oil Pump

- Down is OFF

Turn off the  
Electrical  
MASTER Switch

- Down is OFF

Turn off the  
Magneto Ignition  
Switch

- Left is OFF

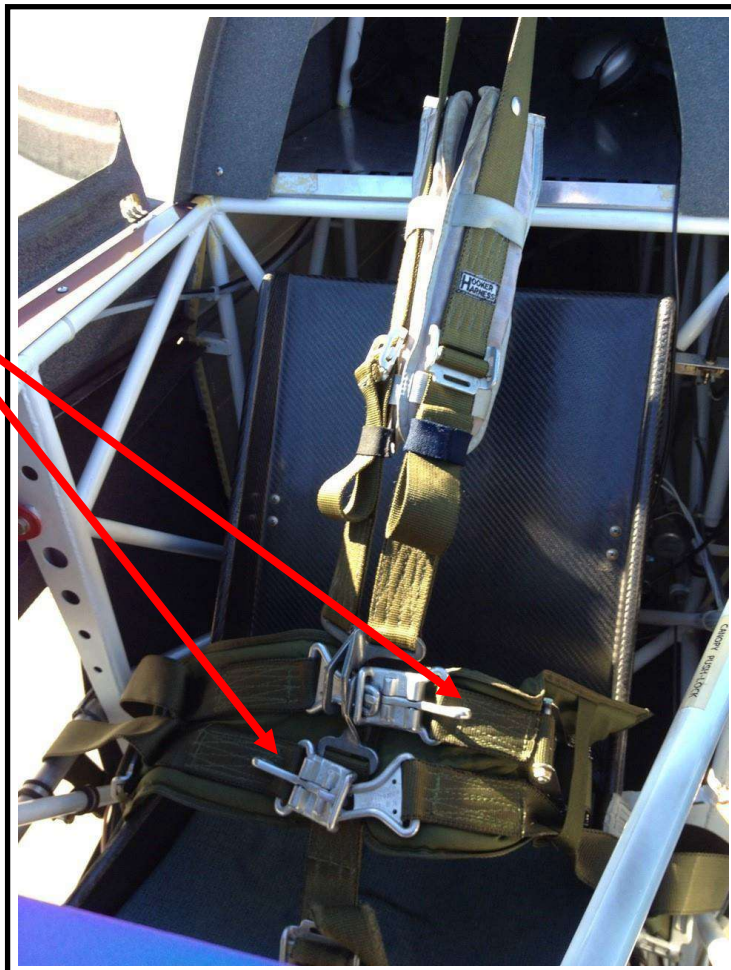


## Harness N540WS

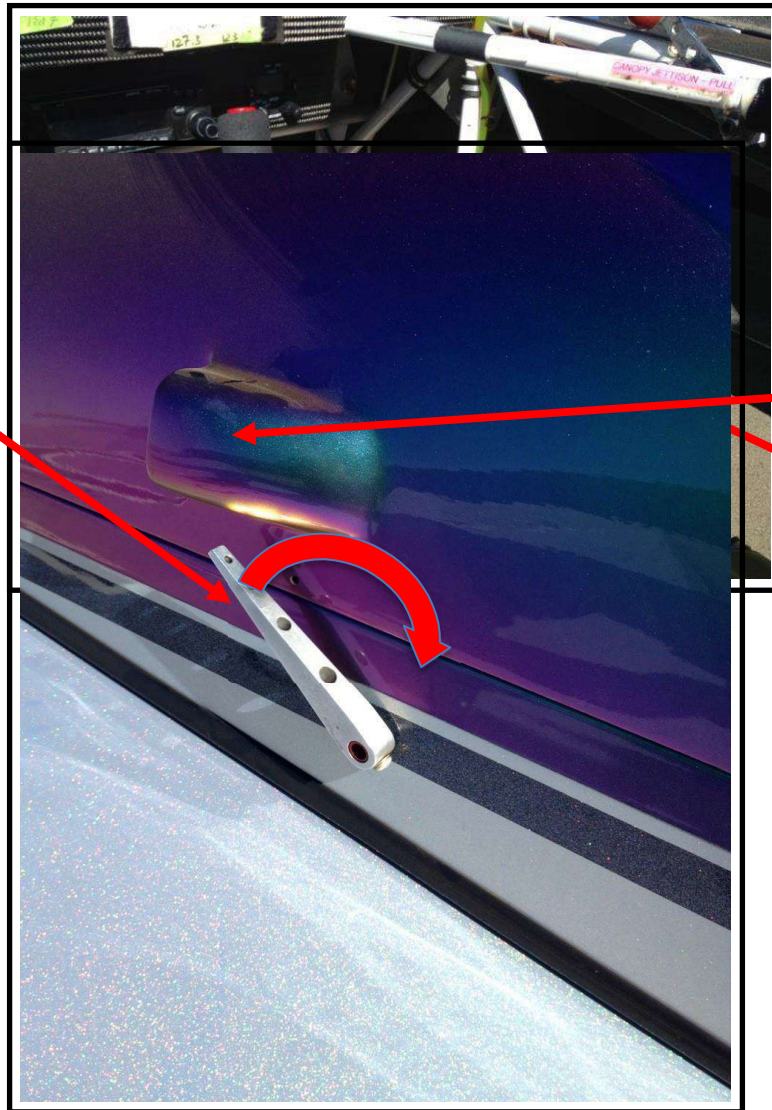
Remove the 5-point  
harness/seat belt. It  
is Olive Green in  
color

Pop open the 2 seat  
belt latches or cut  
the seatbelts, and  
shoulder harnesses

Pilot may be  
removed by using  
the parachute  
straps as a handle



## Fuel System N540WS



**Pull the top  
of the latch  
lever back  
and hold  
there while  
you grab the  
canopy and  
pull up to  
open**

**Grab canopy  
and pull up  
to open  
Fuel Selector,  
Pointing left  
is OFF**

## Canopy System N540WS